

## ANIMAL CREMATION UNIT

### For Private Animal Cremations

### MODEL S-27-G-F

Phone (503) 625-7575 (800) 292-9163 Fax (503) 625-6161

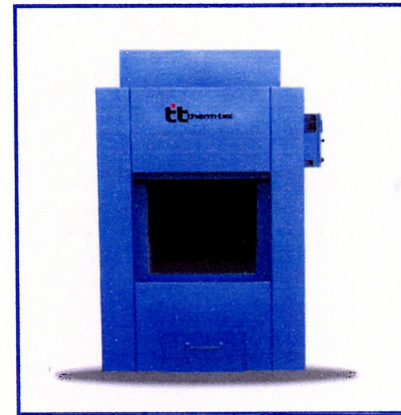
#### Specifically Designed For :

- \* Private Pet Cremation Services
  - \* Veterinary Practices
  - \* Animal Control Facilities & Humane Societies
- Capacity**

200 Pound ( 91 Kgs )

**Batch Load**

65 Pounds (30 Kgs ) Per Hour (Apx. )



#### Power Operated Vertical Load Door

Lined With High Temperature Composite Ceramic Fiber

#### Easy To Load --- Easy To Operate

23" Load Height Front Ash Removal  
22" x 26" Load Opening

#### No Visible Emission - No Odors

Meets State And Federal Regulations

#### No Liquid Leakage

Built In Liquid Retention With 3" Slope to Back Of Tile Hearth

#### Built For Long Life

Constructed Of 3/16" Plate Steel, Lined With 1" 1,900 Insulation And 3" Heavy Duty Refractory  
High Temperature 3" Tile Floor Overlay Over 4" Of Refractory The Base

#### Pre- piped & Pre-wired And Assembled At Factory

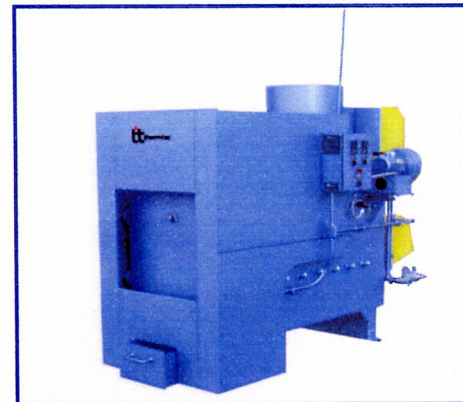
(Two 6' Stack Sections Included - Installed On Site)

#### Automatic Temperature Control For Maximum Efficiency

High - Low Control for Secondary Burner

On - Off Control for Primary Burner

Fuel Saving Preheated Air For Primary & Secondary Chambers



CONSTRUCTION	S-27-G-F
Dimensions : W x L x H	48"x 90"x 81"
Overall Height with stacks installed	18'9"
Primary Chamber Volume 3/16" Plate Construction	27 Cu. Ft.
Stack Section 2 Each - 6' Included	Total 12'
(10 Ga. Steel With 3" 2,300 Deg. Refractory Lining )	
Stack Diameter O.D.	18"
Load Door Opening	22" x 26"
Load Door - Outside Dimensions	32 x 35 1/2"

THERM TEC, INC. has designed, engineered and manufactured  
Animal Crematories And Human Crematories Since 1973

4-12-04

CONSTRUCTION	S-27-G-F
Primary Burner Firing Rate	375,000 Avg.
Secondary Burner Firing Rate	375,000 Avg.
Control Panel, NEMA 12	Yes
Natural Gas / Propane Requirements	800 CFH
Fuel Requirements ( # 2 Oil ) (15.2 Liters)	5.8 GPH
Electrical Requirements	115/60/1 30 AMP
Paint & Primer -High Temp.	
Weight	Pounds 6,500

DISTRIBUTED & SERVICED BY

 **industries, inc.**

13508 OAK ST. • KANSAS CITY, MISSOURI 64145  
(816) 941-2009 • 1-800-345-0847  
Fax (816) 941-2199